

Going abroad as part of your studies

We start at 14:15

Agenda

- Student presentation: Karen
- Considerations
- Options
- **Focus on exchange**
- Application: How to do it
- Nice to know about self-arranged stays
- Nice to know about traineeships
- Who can help with what?



Considerations

Why, when, where, and how much?



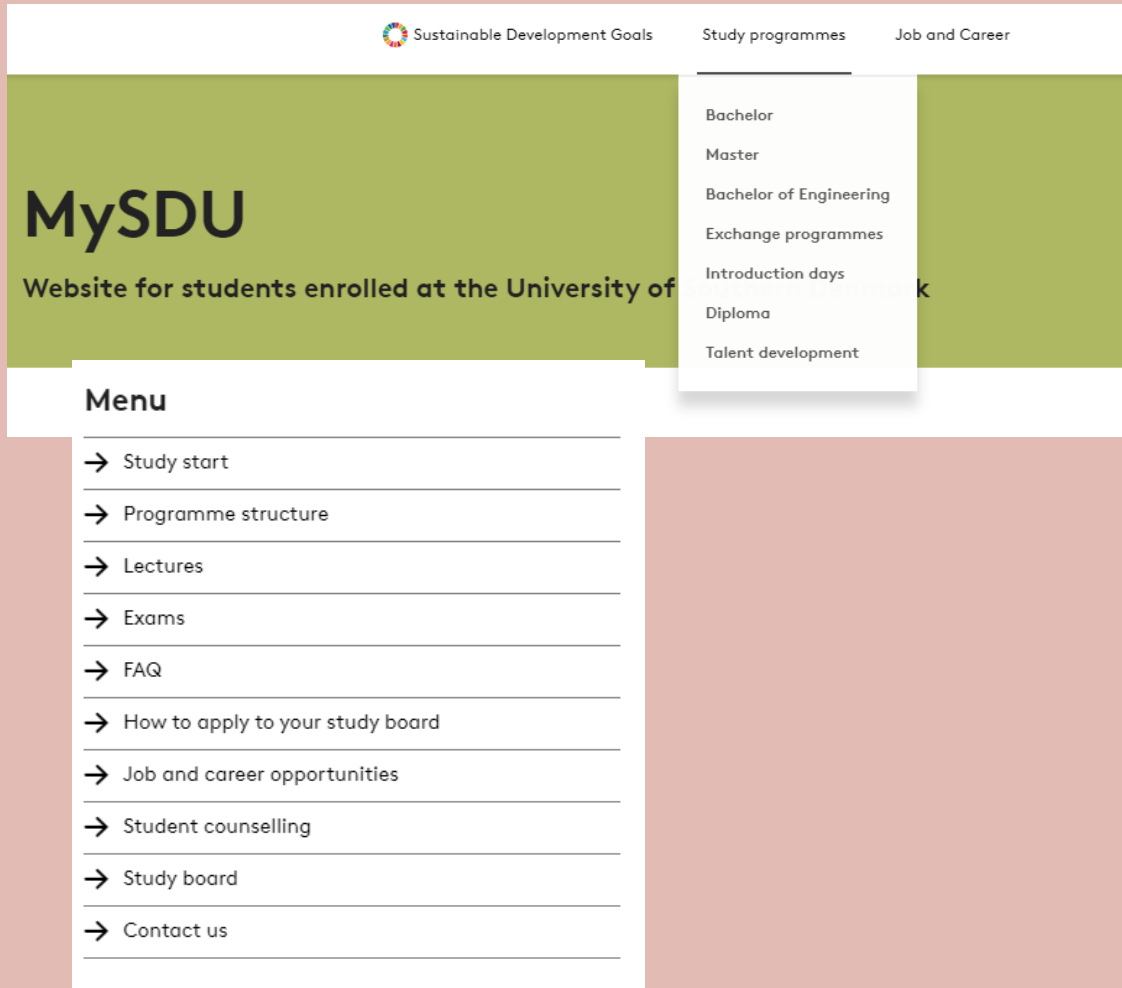
Considerations: Why go?

Academic benefits

- Another approach to studying
- Add to your academic profile
- Your résumé
- Language skills
- Intercultural competences

Social benefits

- International network – new friends
- Personal development
- Independence and courage



Considerations: When to go?

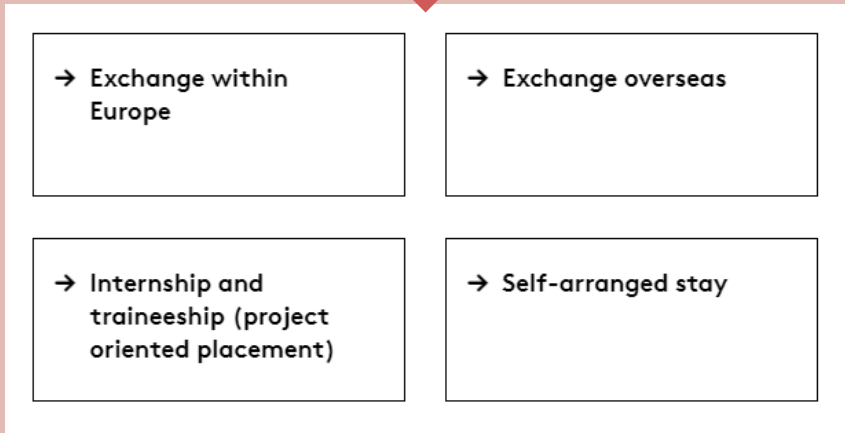
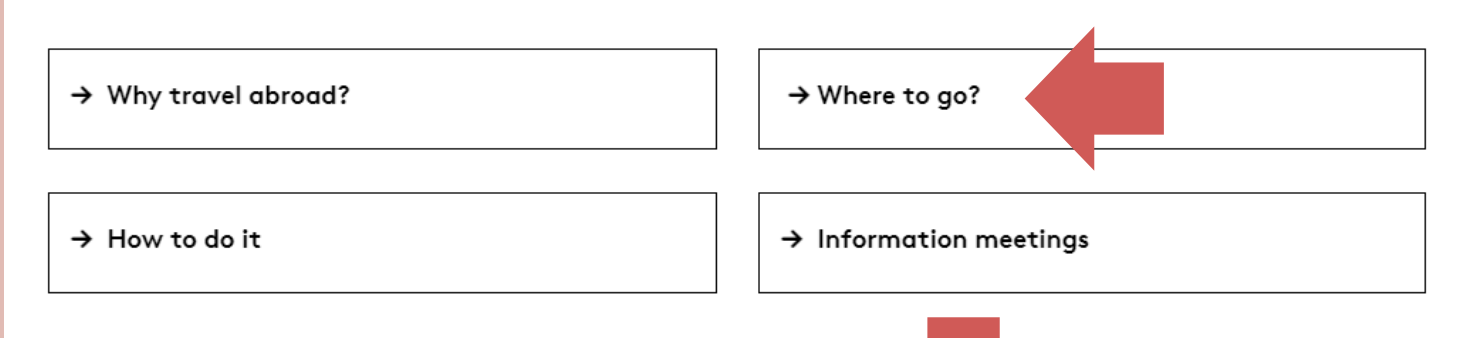
Which semester(s) of your bachelor/master?

- Check your curriculum on mitsdu.dk:

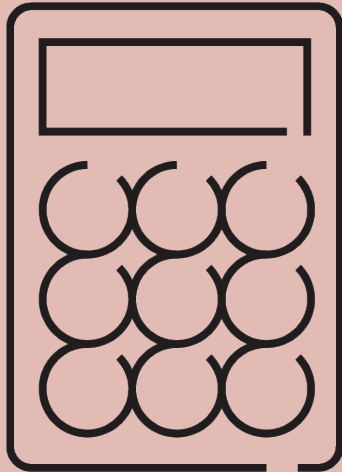
Mitsdu.dk → Mit Studie / Study Programmes → find your study programme → Uddannelsens opbygning / programme structure (link menu to the right)

Considerations: Where to go?

- How far away from home?
- Academic matters
- Conditions for studying
- Special interests
- Language qualifications
- Financial matters



Considerations: Financial matters



Expenses

- (Tuition fee)
- Books and study material
- Travel costs
- Insurance
- Rent
- Food
- Fun and trips

Income

- SU + SU loan
- Travel grant (exchange) or Udlandsstipendium/State Grant (tuition payment)
- Own savings
- Private grants
 - Search for relevant grants
 - Be aware of deadlines
 - Focus your application
 - Don't wait until you have been accepted

Options

Exchange vs. self-arranged



Study abroad: Different ways of doing it

Exchange

- SDU International helps you
- Erasmus+: the EU
- Nordplus: Scandinavia + Baltic states
- Overseas: the rest of the world

Self-arranged

- You help yourself

Project-oriented placement (internships)

Let's focus on exchange (for now)

Erasmus + and Nordplus

- Specific subject area
- Many places available
- Big chance of getting a spot if you're flexible

Overseas

- Faculty wide agreements
- More applicants than places
- Important to have alternatives

Self-arranged with a discount

- James Cook University, Australia
- University of Tasmania, Australia
- Swinburne University of Technology, Australia
- California State University, Bakersfield, USA

SDU Exchange places: Application deadlines

1 November 2021:

For the academic year 2022/2023

1 March 2022:

For the academic year 2022/2023

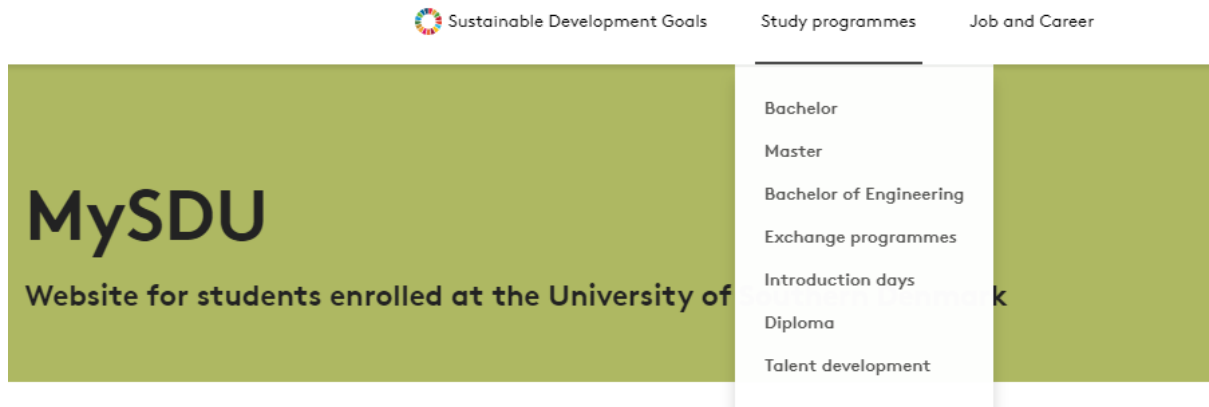
1 October 2022:

For the spring semester 2023



Application for an exchange spot

Application - Step 1:



Check your study program: Which types of courses do you need?

Identify which spots you can apply for:

- Undergraduate/graduate (Bachelor/Master)
- Your study programme (Area of study)
- Broad agreements for the entire faculty

Application - Step 2:

[Sustainable Development Goals](#) [Study programmes](#) [Job and Career](#) [Help and Guidance](#) [Library](#) [Student Life](#) **[Study Abroad](#)** [Job and](#)

[Market & Management Anthropology](#) > [Study Abroad](#)

→ Why travel abroad?

→ Where to go?

Lists of available places

Guides and tutorials

→ How to do it

→ Information meetings

Application - Step 2:

3572	South Korea	Seoul National University of Science and Technology		undergraduate/graduate	3	Business and Social Sciences (SAMF) Engineering (TEK)	2 places reserved for Engineering. Not possible to study business at master level.
------	-------------	---	--	------------------------	---	--	---

ID number to identify each specific agreement

Studies covered by the exchange

Special requirements and considerations to take into account for this particular

Identify the spots you can apply for

University name – and often also remember to check their website for further information! If a department or Institute is listed, then you can only choose courses from these.

Number of exchange places on the exchange agreement, as well as academic level. Undergraduate = BA level / graduate = master level

Application - Step 3:

Please note that this list is only a guideline. Your study board makes the final decision.

Partner	Undergraduate	Graduate	Comments
Australia			
Deakin University	4 points = 30 ECTS	4 points = 30 ECTS	Full-time load: 4 Deakin p
Federation University Australia	60 credits = 30 ECTS	60 credits = 30 ECTS	
Griffith University	40 credits = 30 ECTS	40 credits = 30 ECTS	1 course is normally 10 cr
James Cook University	12 credits = 30 ECTS	12 credits = 30 ECTS	1 course is normally 3 cre
Murdoch University	12 credits = 30 ECTS	12 credits = 30 ECTS	
Queensland University of Technology (QUT)	48 credits = 30 ECTS	48 credits = 30 ECTS	
Swinburne University of Technology	50 credits = 30 ECTS	50 credits = 30 ECTS	1 unit = 12,5 credits = 4 ur
University of Tasmania	4 units = 30 ECTS	-----	1 unit = 12,5% = 7,5 ECTS
University of Wollongong	24 credits = 30 ECTS	24 credits = 30 ECTS	
Brasil			
Pontificia Universidade Catolica do Rio de Janeiro	20 credits = 30 ECTS	20 credits = 30 ECTS	Students normally take 20
Universidade Federal do Rio Grande do Sul	20-24 units = 30 ECTS		
Universidade Tecnológica Federal do Paraná	30 hour course = 4 ECTS	30 hour course = 4 ECTS	Maximum per week = 40 h
Canada			
Centennial College of Applied Arts and Technology, Toronto	20 credits = 30 ECTS	20 credits = 30 ECTS	
Memorial University of Newfoundland	3 MUN credits = 6 ECTS Partner recommends 3-4 courses per semester	3 MUN credits = 6 ECTS Partner recommends 2-3 courses per semester	
Mount Allison University	15 credits = 30 ECTS 9-15 credits possible	-----	1 course = 3 credits ; Min.
St. Francis Xavier University	15 credits = 30 ECTS	15 credits = 30 ECTS	1 course = 3 credits. ; Full

- Check the websites of host universities and find relevant courses
- Tip for search words: University name + “incoming exchange” / “Fact sheet”
- Better to be thorough than quick!
- Courses for the autumn 2022/spring 2023 are probably not available yet – try to find courses from 2021 instead
- Check ”[Credits to ECTS](#)” table for conversion of credits to ECTS (if relevant)

Application - Step 4:

Fill in the application

- Your study programme’s page on mitsdu.dk → Study Abroad (top white bar - only available on English website) → Where to go → Exchange within Europe/Exchange overseas → Apply here
- Login to the application form with your SDU login
- More than one agreement at the same university?
 - Always prioritise a spot with an Erasmus+ grant over at spot with a Nordplus grant
- Make sure your priorities reflect your wishes; you can’t change them after submitting
- Only places listed on the pdfs are available

Have you previously received funding from exchange programs

Yes

No

Priorities

No priorities selected

Filter

Search

Search on id or partner

Country ▾ Undergraduate Graduate

Humaniora ▾ Naturvidenskab ▾ Samfundsvidenskab ▾ Sundhedsvidenskab ▾ Teknik ▾

Exchange agreements 742

Showing 1 - 10 Previous Next

Id	Country	University	Programme	Eligible applicants	Level
3213	FI	Aalto University - School of Science and Technology	Nordplus	Engineering (TEK)	BA,Cand
3177	FI	Åbo Academy University - Biologisk institut	Erasmus	Biology	Cand

Timeline: Preparation for your exchange stay for the academic year of 2022/2023

Now

Clarification and
research of
courses

1 November

Application
deadline

Late December

Decisions are sent
out by SDU
International

Later

Apply to host
university, pre-
approval, etc.

Allocation of exchange places

- Grade point average
- Minimum requirements
 - You must have passed at least 30 ECTS at university level
 - You must have a grade point average of min. 2.0 (U/absence from an exam counts as -3)
- Other factors
 - Needed ECTS load (minimum 25 ECTS) in exchange semester
 - Previous exchanges



Erasmus+ Students with special needs for support

Who?

Students with physical, mental, or health-related conditions with special needs for support

How?

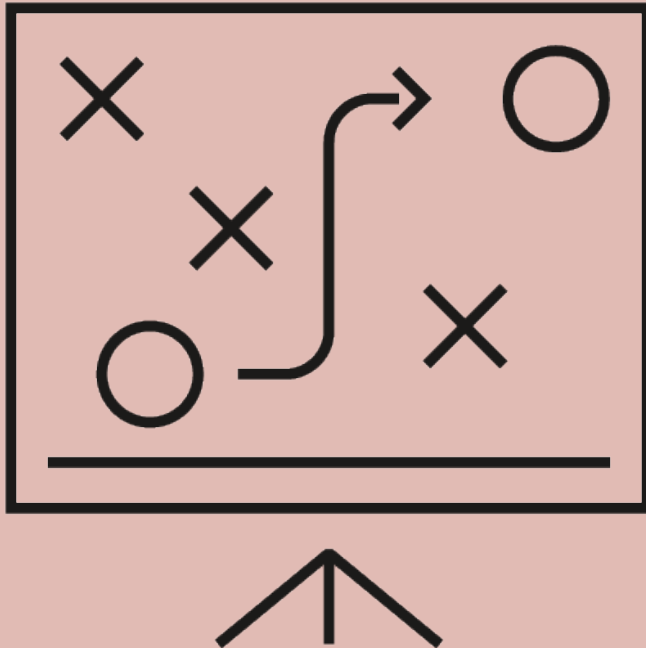
- Apply for extra financial support. Contact SDU International (students who are already qualified by SPS at SDU are eligible for extra financial support)
- Benefit from local support services at the host university



Self-arranged stay

A brief introduction

Self-arranged



- Payment of tuition fees
 - Possibility of Udlandsstipendium/State Grant
- No geographical restrictions
- No direct competition with other SDU students
- You organise everything
- Less support from SDU International
 - Four partners offer discount for self-arranged:
 - James Cook University, Australia
 - Swinburne University of Technology, Australia
 - University of Tasmania, Australia
 - California State University, Bakersfield, USA

SU (Udlandsstipendium)

Drømmer du om at læse et semester eller to eller måske hele din kandidatuddannelse i New York, Berlin, Rom, på Hawaii eller måske et helt andet sted i verden, så er udlandsstipendium noget for dig.



Det er muligt at få tilskud til hel eller delvis dækning af undervisningsafgiften ved et udenlandsk universitet.

Tilskuddet til uddannelsen svarer til det tilskud, den danske stat giver til en tilsvarende uddannelse i Danmark.

Hvis du vil på studieophold og søge udlandsstipendium, skal du:

- Have mindst 1 SU- klip/slutlånsrate, når du begynder opholdet
- Søge merit for de fag, du vil læse
- Optages på værtsuniversitetet
- Søge stipendium (find ansøgningskemaet [her](#))

Ansøgning om udlandsstipendium

Når du har sendt al nødvendig dokumentation til SU-kontoret, skal du udfylde ansøgningskemaet

UDFYLD ANSØGNINGSSKEMAET
HER

Self-arranged: Application for funding

Outgoingapp.sdu.dk → Selfarranged study or traineeship

Submit via www.sdu.dk/SPOC

- Pre-approval from Study Board
- Documentation of admission
- If applying for Udlandsstipendium/State grant: also documentation of tuition fee and course descriptions

So, to sum up:

Exchange

- No tuition fees
- Support from SDU International
- SDU cooperation with host university
- Automatic grant
 - Erasmus+, SDU Internationalisation Fund, or Nordplus
- You can also apply for private grants

Self-arranged

- Tuition fees
- You organise everything
- No geographical limitations
- Applications for grants
 - if you receive SU:
Udlandsstipendium/State Grant
 - If not: SDU Internationalisation Fund
- You can also apply for private grants

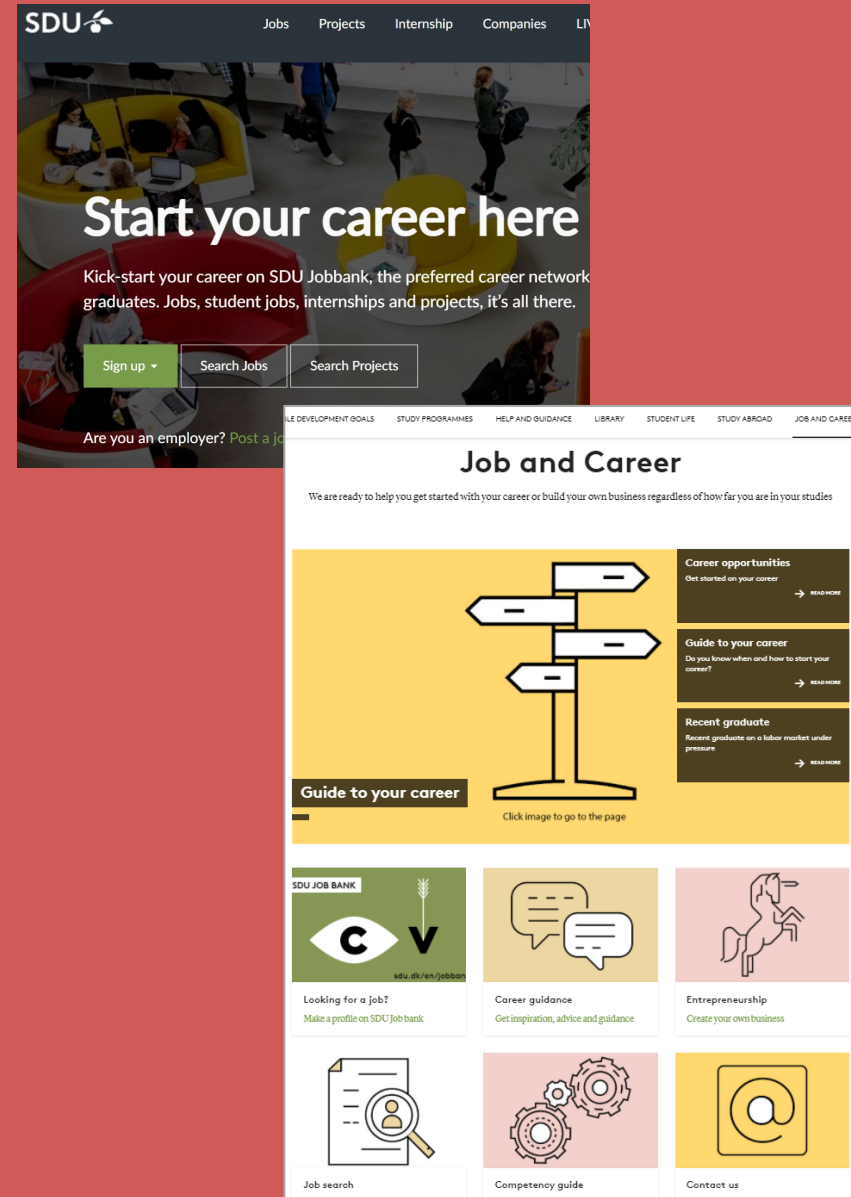
Traineeship

(Project Oriented Placement)

Traineeship (Project Oriented Placement)

How to find a Traineeship place?

- You must find the place yourself
- You can, amongst others, get help here:
 - jobbank.sdu.dk
 - SDU RIO (mitsdu.dk → Job and Career)



Traineeship (Project Oriented Placement)

Internship

- Mandatory part of the study programme (journalists and engineering students (BEng))
- Paid (and no SU) or unpaid (with SU)

Project oriented placement

- No salary
 - Unless in countries with legal requirement of this (e.g. Germany). In that case it is allowed but you will not be able to receive SU at the same time.

Traineeship (Project Oriented Placement)

Erasmus+ Traineeship

- 2-12 months
- EU+ associated countries
- Must apply minimum 1 month before leaving Denmark
- Pre-approval by Study Board / study programme
- Erasmus+ Learning Agreement for Traineeships
- Language assessment before exchange
- Erasmus+ evaluation after

Other types of traineeships

- No geographical restrictions
- Apply for SDU Internationalisation Fund
- Pre-approval by Study Board / study programme and contract with company/organisation

Opportunities to go abroad

If you want to study abroad, you will find many opportunities here.

- Exchange with Europe
- Internship and traineeship oriented placements

Internship and Traineeship (Project Oriented Placement)

Have you been offered an internship or project-oriented placement abroad? Here you can find out how to apply for a grant through SDU International.

- 2 types of grants
Which one to apply for?
- How to apply
Important documents and checklist

APPLY HERE!

Selfarranged study or traineeship

Erasmus+ traineeship / internship, applications for the Internationalization fund – both traineeship and study – and application for state grant.

Self arranged

Am I a paid?

Traineeship (Project Oriented Placement)

Application online:

- Your study programme's page on mitsdu.dk → Study Abroad (top white bar - only available on English website) → Where to go → Internship → Apply here
- Login to the application form with your SDU login

Submit via spoc.sdu.dk

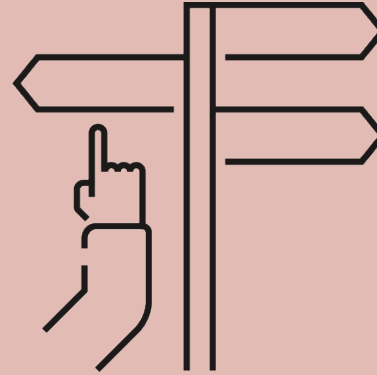
- Approval from study / study board
- Contract for traineeship
- If Erasmus+: Learning Agreement for Traineeships



I'm confused...

Who can help me?

Glad you asked!



SDU International

- Exchange places
- Application process
- Admission to host university
- Finances
- Contact to partner universities

Study Board/Academic Student Advisor

- All questions related to courses and your study programme at SDU
- Pre-approval of courses
- Final credit transfer

Host university

- Application form
- Acceptance letter
- Courses / type of work
- Housing
- Introduction

How can I contact SDU International?



SPOC.sdu.dk → SDU International (EN) //
International uddannelse (DK)



+45 6550 2264



Office: Located at the Campus Square (by the main entrance)

Opening hours:

Monday: 10-14

Tuesday: 12-16

Wednesday-Friday: 10-14

