

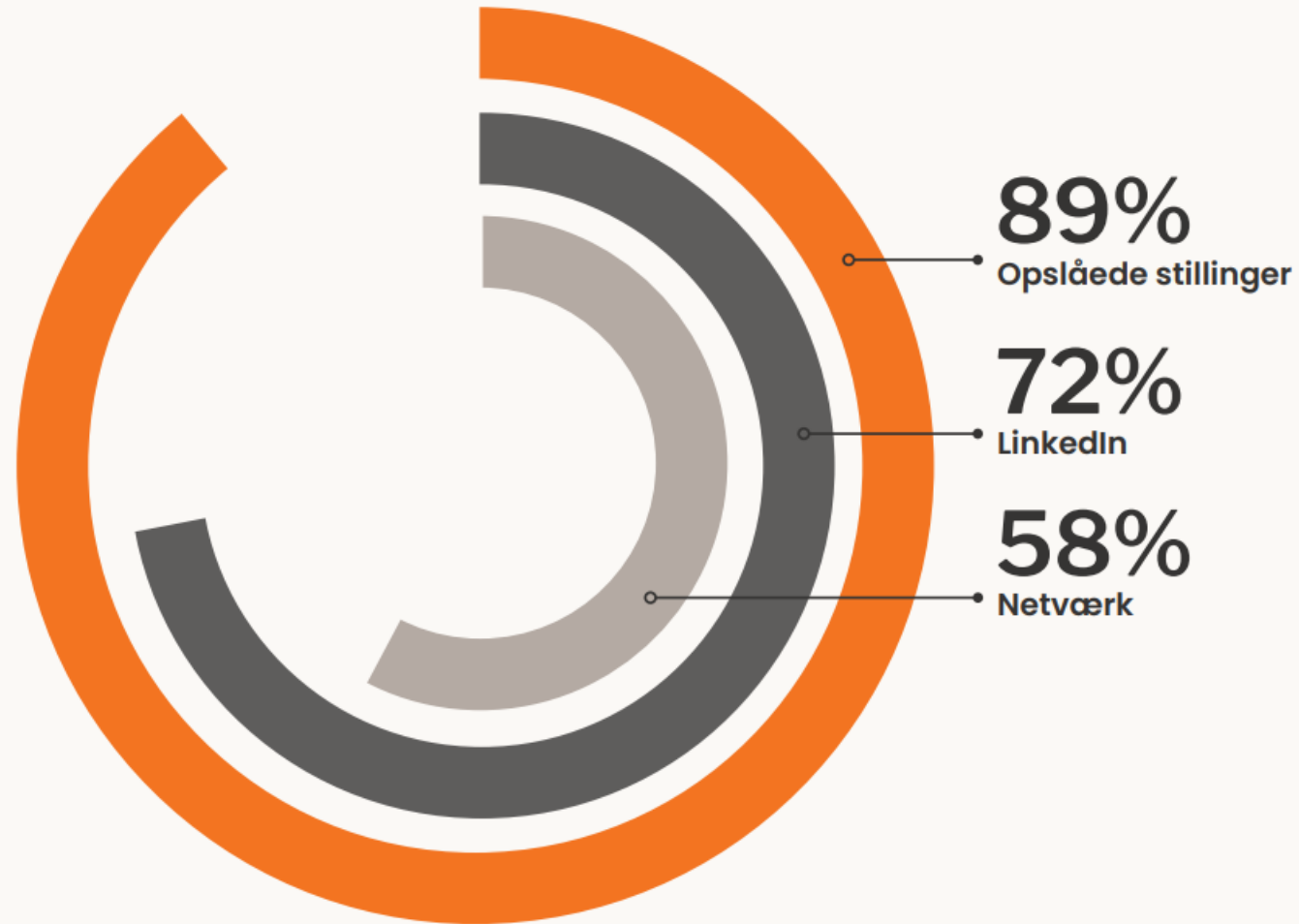
**Do you need help to  
contact and collaborate  
with an organization in  
your master thesis  
project?**

**SDU RIO can support you**



# Rekrutteringskanaler

De tre mest anvendte rekrutteringskanaler i 2024:



→ Counts as experience on your CV

## should you e?

Store private	Offentlige
78%	72%
41%	50%
45%	36%
40%	44%
35%	29%
18%	22%
14%	14%
2%	3%

- create value with

researcher in a

knowledge

opportunities

**Your supervisor helps you with the academic relevancy and subject-oriented stuff**

**RIO can give inputs about:**



If you are looking for a relevant organization – inputs for research & jobbank



Reaching out – how can you contact the organization and at what level



Advices on the agreement phase – e.g. NDA at [mysdu.dk/career paths](https://mysdu.dk/career-paths)



The collaboration process – how to navigate in the organization for mutual benefit



How to stay in touch after data collection – the organization is your future network

# Where can you find organizations?

Desk research, databases, media,  
company websites

LinkedIn, SDU Jobbank, Career Fairs

## Opportunities

Network – your private and  
professional contacts

Contacts, projects, cases, internship,  
etc from study life

# SDU Student job day



---

1. October at 09:30 – 12:30

---

Campus hall at Odense campus

---

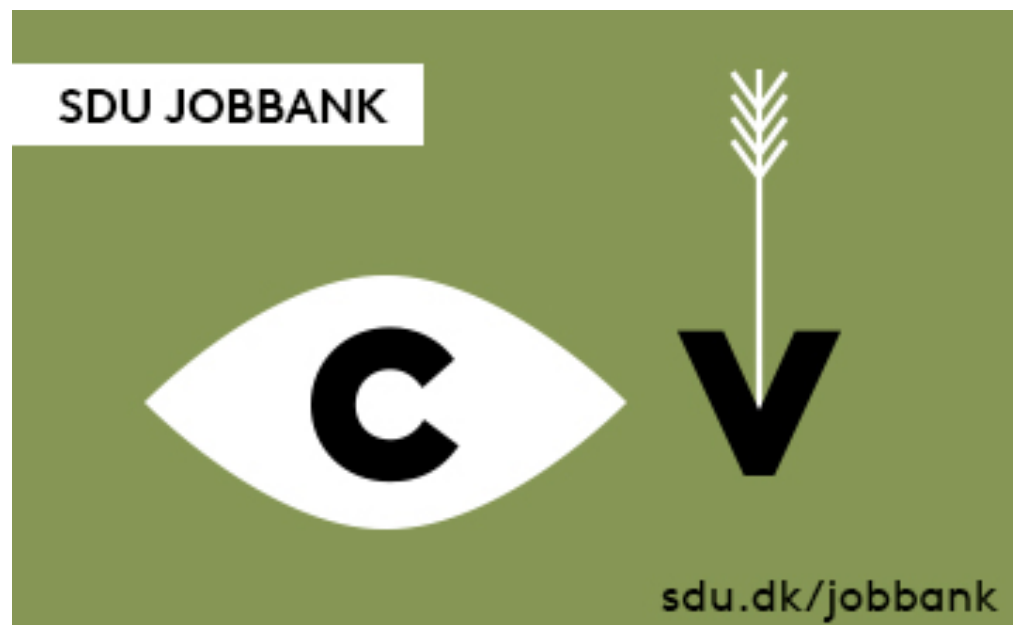
Meet and network with local, national and international organizations

---

20 participating organizations

---

# SDU Jobbank



<https://connect.jobteaser.com>

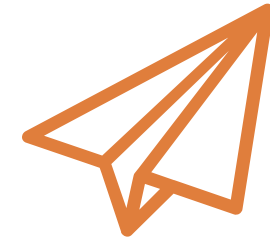
# Get support from RIO



You can do a [drop-in visit](#) in our Career Services on Gydehøtten  
10-14, all days except Wednesday



You can book a career talk all days from  
9-15 except Wednesday on  
<https://minkarriere.sdu.dk/>



You can send us an e-mail and get help  
online: [karriere@sdu.dk](mailto:karriere@sdu.dk)

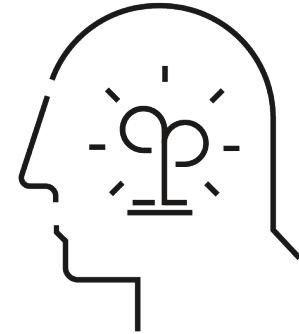
# What can we help you with?



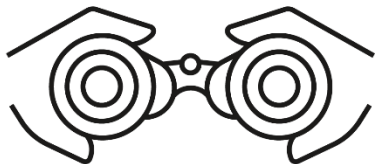
**CV &  
Application**



NETWORKING



**Competencies**



**Career Perspectives in your  
projects/assignments e.g. BA  
project/Thesis**